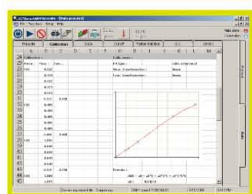
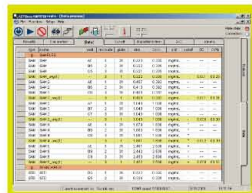
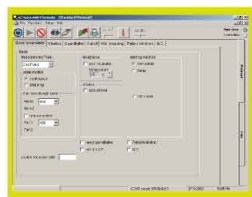


AgileReader™ utilizes a precision optical system to provide fast and reliable absorbance measurements. AgileReader™ can perform ELISA, EIA or enzymatic activity measurements between the wavelength of 340~900nm with end point, two point, and kinetic measurement method.



## Feature

- ❑ Wide wavelength range of 340-900nm allows assay flexibility
- ❑ Built-in incubator for kinetic studies
- ❑ Accurate temperature control guarantees stable data for long term kinetic assays
- ❑ Built-in shaker with 8Hz, 11Hz, and 14Hz user selectable shaking modes
- ❑ 4~5 filters supplied as standard (standard or customer's choice)
- ❑ Additional filters can be user installed in minutes
- ❑ Comprehensive on-board software allows the reader to be used effectively as a stand-alone instrument
- ❑ A full control and data analysis PC software package is supplied as standard
- ❑ Quick Start Wizard allows fast and easy setup of read protocols and data analysis
- ❑ Comprehensive library of inbuilt data analysis options for both endpoint and kinetic assays
- ❑ Custom plate layouts with color coding, simplify even the most complex assays
- ❑ Automated data export as text / html or into Word / Excel

## Specifications

Model Number	AMPR-900
Wavelength Range	340-900nm
Interference Filters	Max 8 selectable filters in a filter wheel, +/- 2 nm half bandwidth filter
Read Channels	8 (+ 1 reference)
Supplied filters :	
1.A Model	405, 450, 490 and 600nm (space for 4 optional filters) ;
2.B Model	340, 405, 450, 490 and 600nm (space for 3 optional filters)
Center Wavelength	accuracy +/- 2 nm
Measurement Range	0.000 ~ 4.000 Abs
Resolution	0.001 Abs
Accuracy	+/- 0.005 Abs or 2%, whichever is greater (from 0.000 to 3.000 Abs)
Precision	<0.3% CV from 0.000 to 2.000 Abs; <1.0% CV from 2.000 to 3.000 Abs
Linearity	+/- 2% from 0.000 to 3.000 Abs
Measurement Time	<5 seconds at continuous reading
Measurement Mode	End point, two point, and kinetic
Light Source	Halogen lamp (12V/20W)
Photo Detector	9 silicon photo detectors
Shaking	Three user selectable modes (8Hz, 11Hz, and 14Hz)
Incubator	RT +3°C up to 50°C
Plate Type	96-well plate
Display	8x21 character graphic dot-matrix LCD module
Keypad	25 key tactile membranes
Printer Interface	Parallel Centronics
Computer Interface	RS232C or USB serial interface
Data Storage	100 sets of protocol, 50 sets of data and 20 sets of standard curve
Dimension	35.5 x 34.5 x 17.4 cm
Weight	14KG
Power Supply	100~240V, 50/60Hz, 90W max
Operating Conditions	+15°C to 35°C, RH 90% max



# AgileReader™ Microplate Reader

